

Our Mission

The mission of Milwaukee Area Land Conservancy is to preserve and protect valuable land and water resources for the benefit of the public, as well as for the wildlife dependent on these resources, in order to maintain quality of life, biological diversity, and natural scenic beauty for future generations.



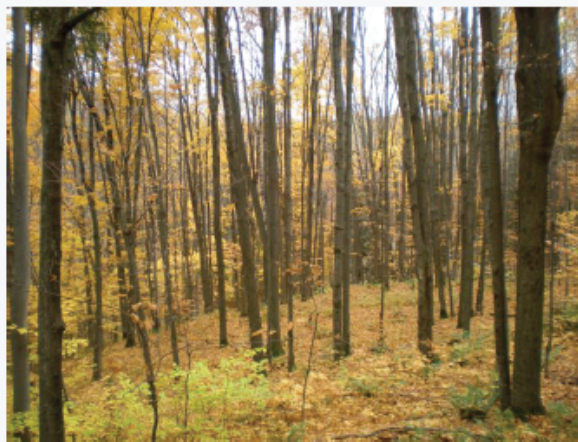
Ryan Creek, Franklin Savanna State Natural Area

Conservation Vision

Not long ago, we set out on our mission to protect and restore the remaining areas of wild beauty and diversity in our Milwaukee area home. Rapid changes to the landscape continue to impact many of these beautiful places. In the short time that the Milwaukee Area Land Conservancy has been established as a 501(c)(3) not for profit organization, we've accomplished several important achievements toward our mission. With your help we can protect these significant community assets.

Milwaukee Area Land Conservancy

Protecting Natural Areas for Future Generations



MILWAUKEE AREA LAND CONSERVANCY
P.O. Box 320304
Franklin, Wisconsin 53132
414.377.3851
malc@mkeconservancy.org
www.mkeconservancy.org



Milwaukee Area
Land Conservancy

www.mkeconservancy.org





Bloodroot (*Sanguinaria canadensis*)

Opportunities

Despite being the most urbanized county in Wisconsin, Milwaukee County has many natural areas that still offer beautiful scenery, diverse plant communities, and wildlife habitats. Perhaps you enjoy one of these natural areas near your home. Have you ever wondered if it will remain intact or become developed? Do you want opportunities to enjoy bird watching, hiking, and peaceful reflection?

You can help protect our natural heritage by:

- making a donation
- becoming a member of MALC
- volunteering your time and talents
- placing your land under permanent protection
- providing referrals to interested landowners

Today there are more than 50 land trusts throughout Wisconsin. Together they have helped protect over 200,000 acres. Wisconsin's many land trusts have become an important force in efforts to protect the state's land and water resources.

Conservation Options

MALC provides conservation options to help landowners and local units of government balance land preservation with the growing pace of development.

How can I protect my property?

Owners can protect their property through various conservation options. Each land protection arrangement is unique — the result of discussions and negotiations between the landowner and land trust. MALC, along with your legal or financial advisor, can help you determine which option is right for you.

Some of the available options are:

- Bargain Sale
- Conservation Easement
- Fair Market Sale
- Gifts of Land
- Limited Development

For more information about these conservation methods contact MALC or visit www.mkeconservancy.org.



I would like to contribute to MALC.

Please join us in protecting our important community resources by making a contribution at one of the following fund levels:

- | | |
|---|---|
| <input type="checkbox"/> New Growth*
\$35 | <input type="checkbox"/> Beech Level
\$500-999 |
| <input type="checkbox"/> Oak Level
\$36-99 | <input type="checkbox"/> Forest Level
\$1,000+ |
| <input type="checkbox"/> Maple Level
\$100-499 | <input type="checkbox"/> Other Amount
_____ |

*Standard Membership

Please print.

Name: _____

Address: _____

City/State/Zip: _____

Phone: _____

Email: _____

Your contribution will support land acquisition, land stewardship and general operating expenses that help us carry out our mission.

- ☐ I am interested in volunteering.
- ☐ I am interested in learning more about protecting my land.

Make checks payable to Milwaukee Area Land Conservancy. MALC is a 501(c)3 nonprofit organization. Donations to MALC are tax deductible as allowed by law.

Please mail this form along with your donation to:

Milwaukee Area Land Conservancy

P.O. Box 320304

Franklin, Wisconsin 53132

414.377.3851

www.mkeconservancy.org
malc@mkeconservancy.org